

ENGINEER TO ORDER

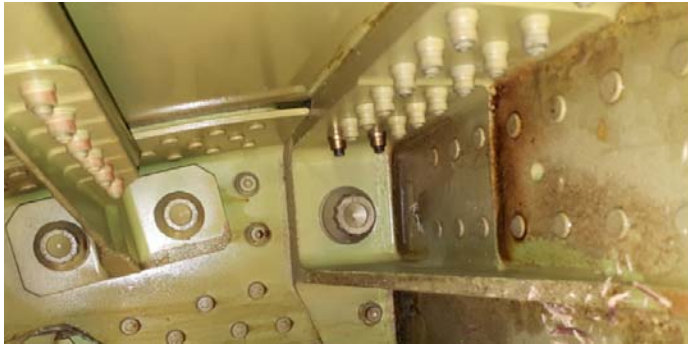
SPECIAL PROJECT INFORMATION SHEET



Project Description	Special reactions & output drives to fit PTS-72-2000		
Date created	December 2017	Project Number	Q4290

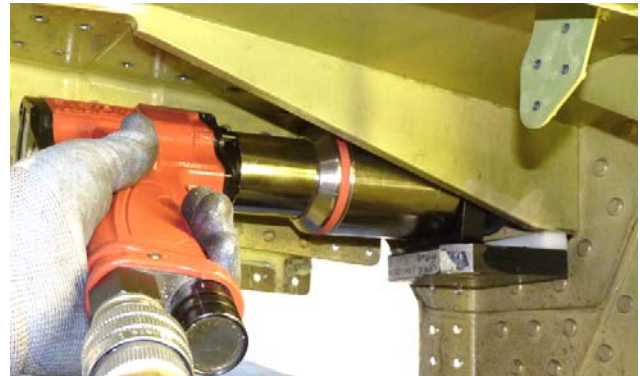
INTRODUCTION & APPLICATION

Aircraft maintenance internal bolting applications up to 2,000 N.m, with difficult access, and where standard reactions do not suit.



SOLUTION

PneuTorque PTS-72-2000 pneumatic torque tool, Lubro control unit, special reactions & output drives.



TECHNICAL SPECIFICATION / DATA HIGHLIGHTS

Special reactions are interchangeable with standard reaction.

Special 1-1/16" & 1-3/16" female bi-hex. output drives are interchangeable with standard square drive.